

# Three Easy Steps to Specifying Your Infratech Heating System

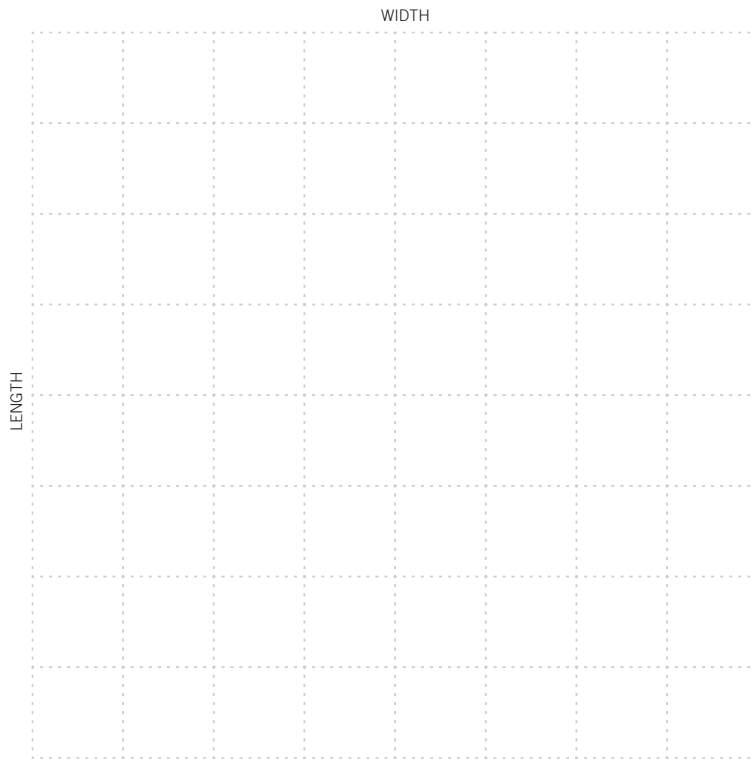
Thank you for your interest in Infratech comfort heating systems. We offer a versatile range of heating size, capacity, mounting, color and control options, and make it easy to choose the solution that's right for your space, style and budget.

*Ready to get started? An Infratech Sales Professional can help you complete this form.*

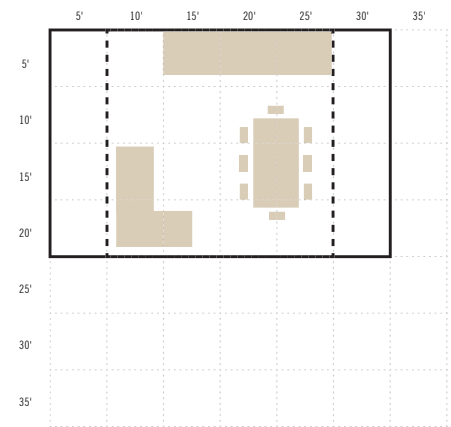


## 1 First, let's measure the space

- A. Using the graph below, draw a bird's eye view of the total dimensions of your outdoor space. Estimate size/distance by allowing approximately five feet per grid square. With a solid line, outline the dimensions of your space. Use a dotted line to indicate the areas you would like to heat.



### EXAMPLE



B. Total Outdoor Space Length \_\_\_\_\_ FEET  $\times$  Total Outdoor Space Width \_\_\_\_\_ FEET

Total Outdoor Mounting Height \_\_\_\_\_ FEET

C. Describe what the heaters will be attached to (PERGOLA, TRELIS, WALL, CEILING, ETC.):

---



---

D. Describe the environmental conditions that characterize your outdoor space (EG. WINDY OR FOGGY, ENCLOSED ON THREE SIDES, ETC.):

---



---

## 2

### Next, choose the heating configuration that will best heat your space.

You may need an Infratech Sales Professional to help you complete this portion.

#### Infratech Technical Sales portion:

**A.** Select your heater type(s). PLEASE REFER TO PAGES 8-9 OF THE INFRATECH CATALOG TO SELECT YOUR HEATER. SEE PAGES 24-25 OF THE INFRATECH CATALOG TO VIEW THE COVERAGE CHART TO IDENTIFY THE AVAILABLE WATTAGE FOR YOUR HEATER. PLEASE CHECK THE INFRATECH HEATERS SECTION IN THE REFERENCE MANUAL TO VIEW AVAILABLE WATTS, VOLTS, AND AMPS FOR YOUR HEATER.

HEATER SERIES	HEATER QUANTITY	WATTS	VOLTAGE (CHECK ONE)				AMPS REQUIRED
C-SERIES	_____	_____	<input type="checkbox"/> 208	<input type="checkbox"/> 240	<input type="checkbox"/> 277	<input type="checkbox"/> 480	_____
CD-SERIES	_____	_____	<input type="checkbox"/> 208	<input type="checkbox"/> 240	<input type="checkbox"/> 277	<input type="checkbox"/> 480	_____
SL-SERIES	_____	_____	<input type="checkbox"/> 208	<input type="checkbox"/> 240	<input type="checkbox"/> 277	<input type="checkbox"/> 480	_____
W-SERIES	_____	_____	<input type="checkbox"/> 208	<input type="checkbox"/> 240	<input type="checkbox"/> 277	<input type="checkbox"/> 480	_____
WD-SERIES	_____	_____	<input type="checkbox"/> 208	<input type="checkbox"/> 240	<input type="checkbox"/> 277	<input type="checkbox"/> 480	_____
<b>TOTAL AVAILABLE AMPS:</b> _____			<b>TOTAL AMPS REQUIRED:</b> _____				

#### Customer portion:

**B.** Choose your color. FOR A LIST OF COLOR OPTIONS, PLEASE REFER TO PAGE 21 OF THE INFRATECH CATALOG.

##### C-SERIES | CD-SERIES | W-SERIES | WD-SERIES

- STAINLESS STEEL (NO COLOR)     WHITE
- ALMOND     BEIGE
- BRONZE     GREY

- BISCUIT
- BLACK
- COPPER

##### SL-SERIES

- SILVER
- BRONZE
- BLACK

**C.** Choose your preferred mounting option. FOR A LIST OF MOUNTING OPTIONS, PLEASE REFER TO PAGES 16-19 OF THE INFRATECH CATALOG.

- WALL MOUNT     CEILING MOUNT     POLE MOUNT     FLUSH MOUNT

**WARNING:** HEATERS CANNOT BE FLUSH MOUNTED ON A SLOPED/PITCHED CEILING.

## 3

### Now, choose the control option that best supports the technical specifications of the heaters you've selected, and offers the functionality you desire.

You may need an Infratech Sales Professional to help you complete this portion.

#### Infratech offers two different levels of controls:

Value controls PLEASE REFER TO PAGE 13 OF THE INFRATECH CATALOG.

Our standard controls are ideal for basic functionality and limited budgets. Options include:

- Simple On/Off Switches for single element C-Series, W-Series and SL-Series heaters
- Duplex Stack Switches for dual element CD-Series and WD-Series heaters (Range 120/277 VAC / 20 amps max per pole)
- INF Input Regulators for single element heaters 3,000 watts or less (15 amps max)

Custom controls PLEASE REFER TO PAGE 11 OF THE INFRATECH CATALOG.

Get maximum functionality, convenience and enjoyment from your heating system with Infratech custom controls. Choose from our versatile range of options to enjoy these features:

- Hands-free functionality via remote mobile device or Bluetooth voice activation
- Smart home integration
- True intensity from 0-100%
- The ability to set timers
- Zoning capabilities